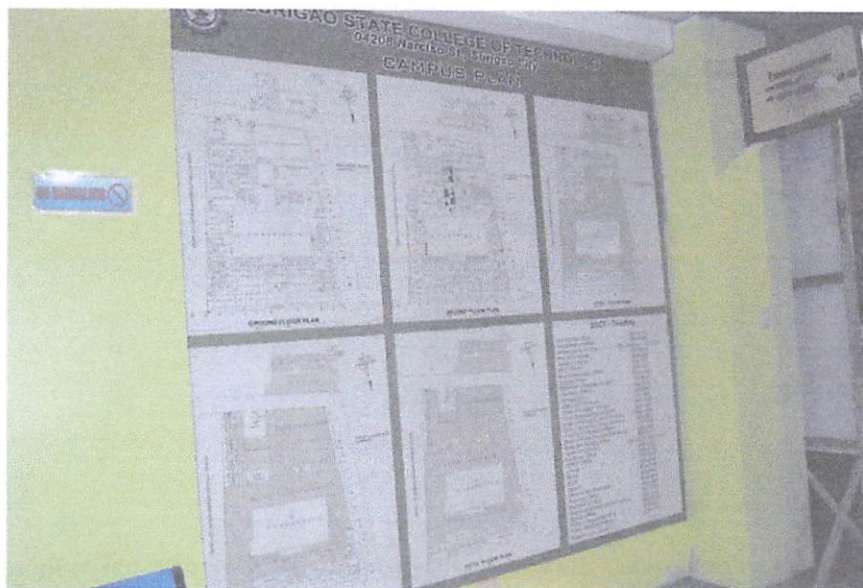


1.2. The site plan is strategically displayed inside the campus indicating the location of the different buildings, driveways, parking areas, etc.



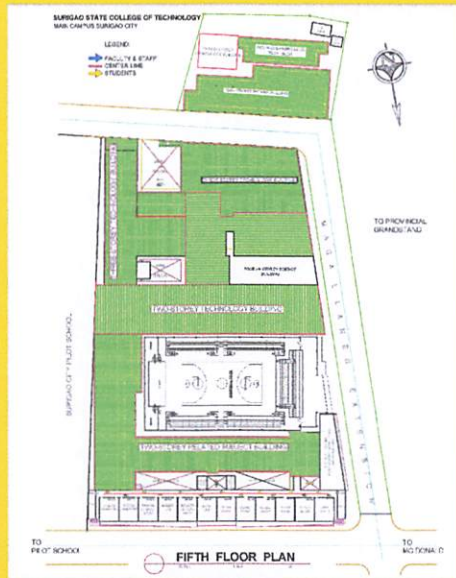
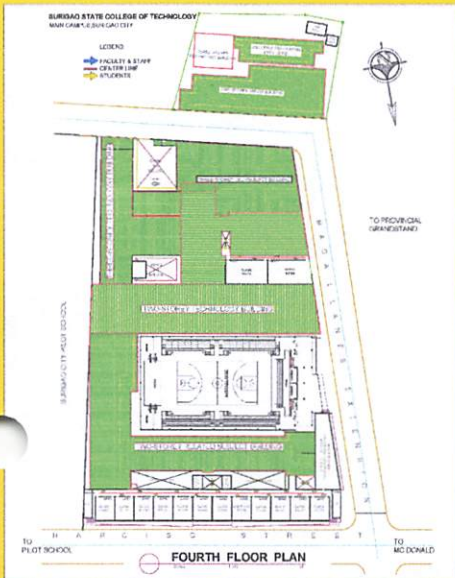
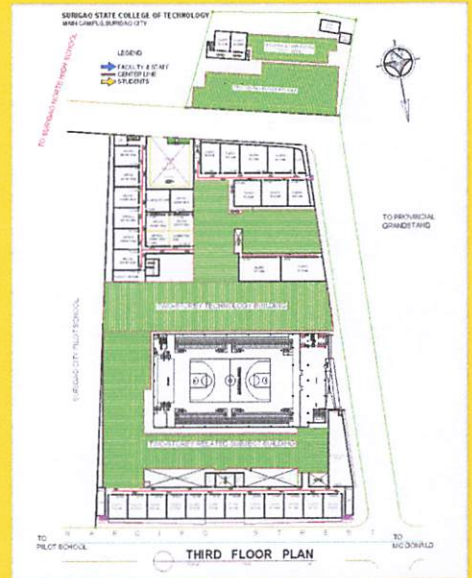
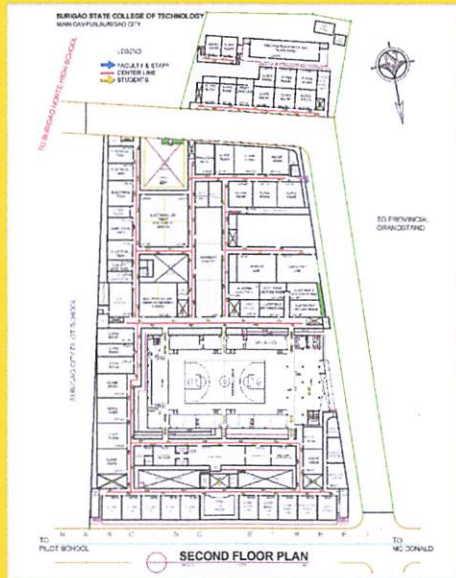
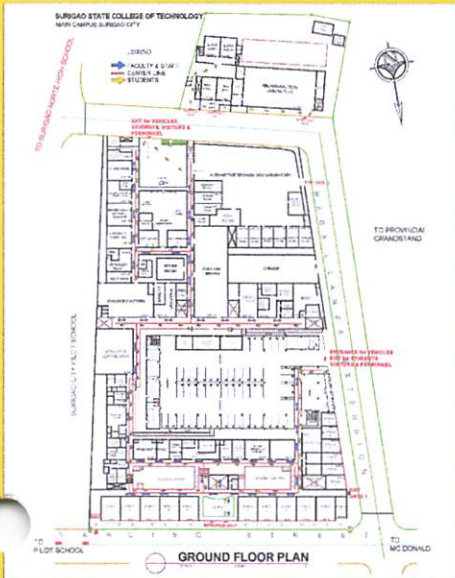
Floor plans indicating fire exits and location of fire-fighting equipment, stand pipes, and other water sources are conspicuously displayed in each building.



# SURIGAO STATE COLLEGE OF TECHNOLOGY

Surigao City

## CAMPUS PLAN



### SSCT - DIRECTORY

ACCOUNTING OFFICE	826-8172
ACCREDITATION OFFICE	826-5508
ADMINISTRATIVE OFFICE	826-6346 / 826-0135
ASSESSMENT CENTER OFFICE	826-0624
AUDITOR'S OFFICE	826-3309
BAC OFFICE	826-1349
BOARD SECRETARY OFFICE	826-5070
BUDGET OFFICE	826-6442
BUILDINGS AND ESTATES OFFICE	826-6447
CHIEF ADMINISTRATIVE OFFICER OFFICE	826-0135
CASHIER'S OFFICE	826-5159
CAMPUS DIRECTOR OFFICE	826-3906
CLINIC	826-6451
COLLEGE OF ARTS AND SCIENCES	826-9153
COLLEGE OF EDUCATION	826-8829
COLLEGE OF ENGINEERING AND INFORMATION TECH.	826-3903
COLLEGE OF TECHNOLOGY	826-3905
GUARD (ENTRANCE)	826-5165 / 826-1266
GUIDANCE OFFICE	826-5262
HRMO OFFICE	826-8122
JEEP OFFICE	826-3974
LIBRARY	826-6435
OFFICE OF THE PRESIDENT	826-6443
OFFICE OF THE VICE PRESIDENT FOR ACADEMIC AFFAIRS	826-1244
OFFICE OF THE VICE PRESIDENT FOR ADMINISTRATION	826-5070
PLANNING OFFICE	826-3953
REGISTRAR'S OFFICE	826-3908
RESEARCH & DEVELOPMENT OFFICE	
SUPPLY OFFICE	826-8325
TSG OFFICE	826-0634
WATER REFILLING STATION	826-1411