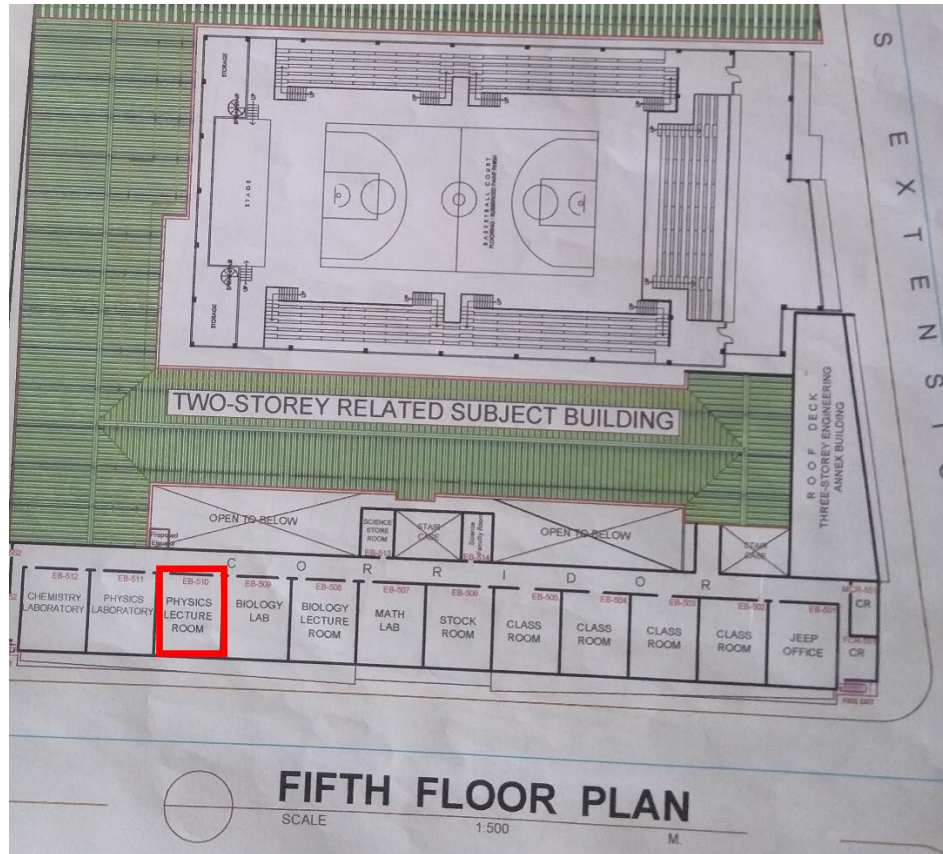


Chemistry Laboratory and Physics Laboratory

I. Location and Seating Capacity

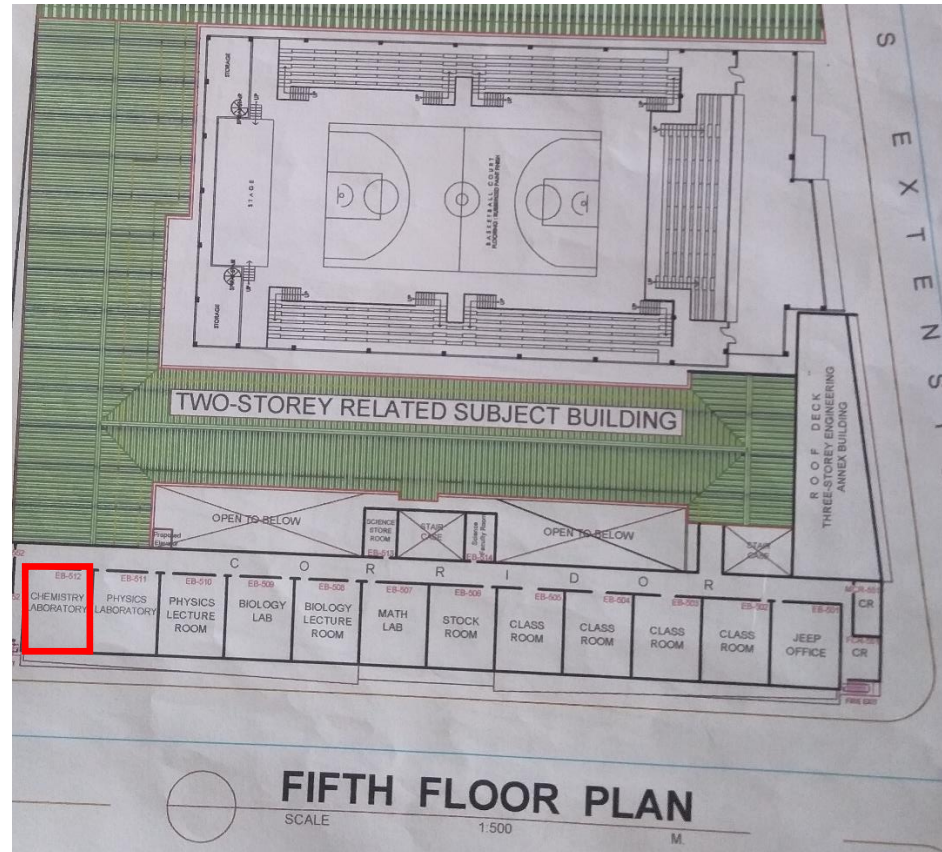
A. Physics Laboratory (EB building)

Seating Capacity: **32 seats** (Used as regular classroom)

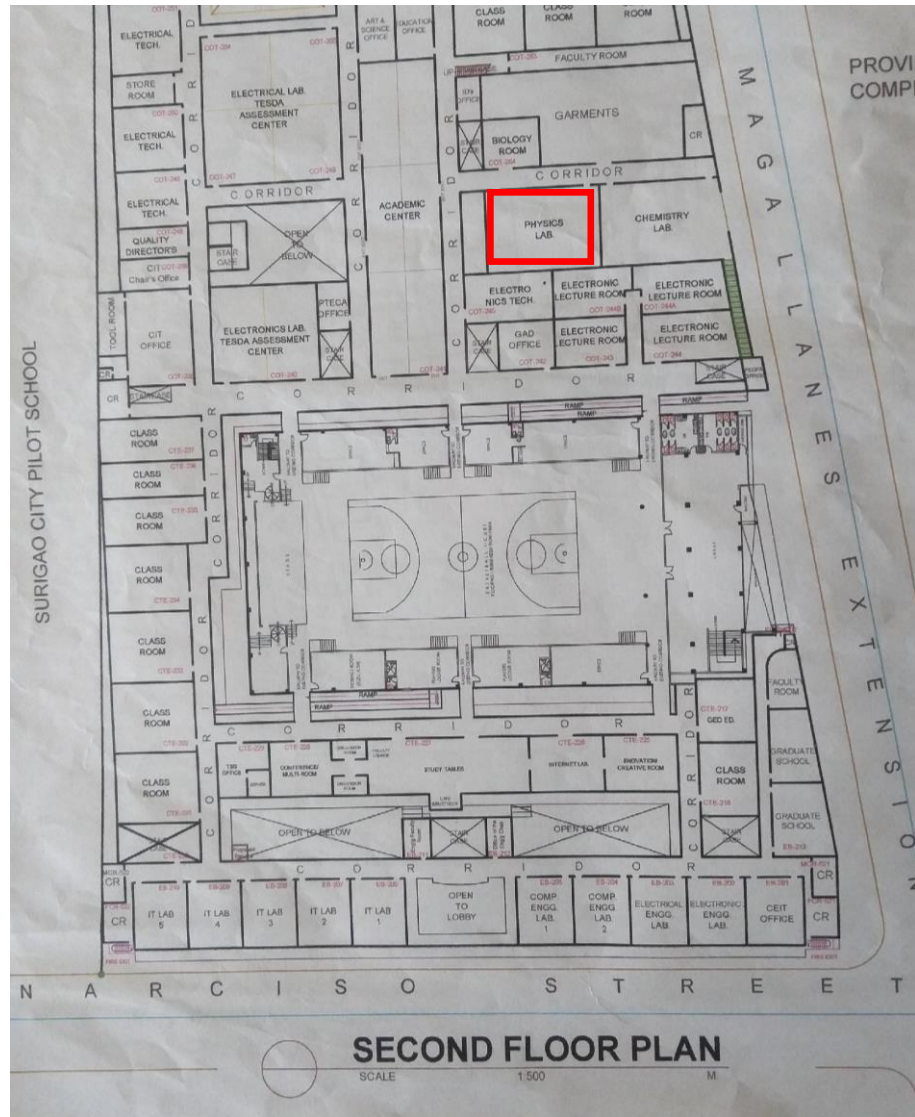


B. Chemistry Laboratory (EB Building)

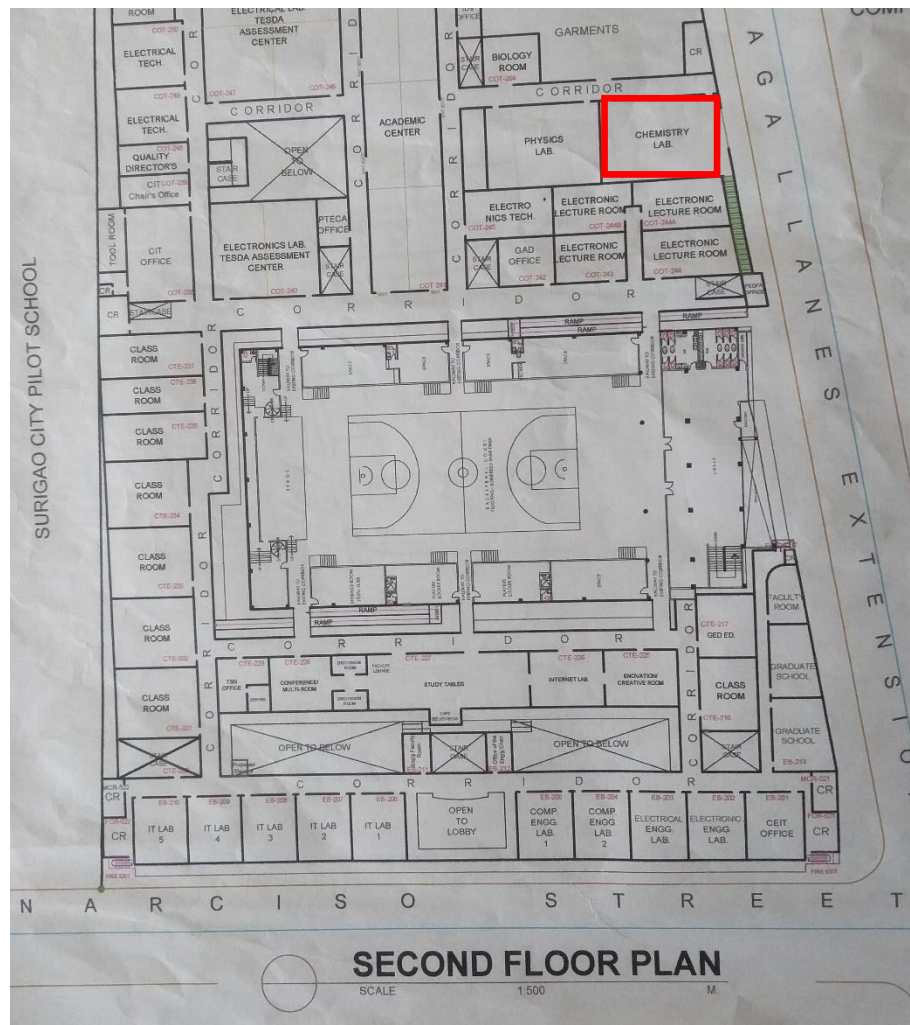
Status: Under Renovation



C. Physics Laboratory
Seating Capacity: **72 seats**



D. Chemistry Laboratory
Seating Capacity: **44 seats**



II. Available Equipment

Beam balance	13
Top loading balance	2
Spring balance	4
Weighing scale	2
Double beam balance	14
Florence flask	24
Graduated cylinder	59
Test tube	191
Test tube brush	21
Test tube holder	66
Test tube rack	9
Beaker	126
Erlenmeyer flask	51
Burette	7
Meter stick	5
Alcohol lamp	33
Stirring rod	26
Thermometer	10
Petri dish	9
Watch glass	23
Aluminum tray	47
Funnel	20
Separator funnel	6
Safety goggles	7
Tripod	26
Iron stand	9
Wire gauze	42
Mortar and pestle	14
Filter papers and Membrane Filters	6 boxes
Microscope slides	4 boxes(72 each)
Centrifuge machine	1
Soil Surveyor	5
Microscope	26
Hot plate	2
Force table	1
Sterilizer	1

*Note. All equipment are stored at the chemistry laboratory. Equipment which are not unboxed were not included.





Prepare by:


Engr. Vrian Jay V. Ylaya
Laboratory In charge